



"Nettlestone Primary School is a great first step into the world of education. It has offered our son a nurturing environment to bring out his personality and supported us as parents through an important learning phase."
Parent

"I like my teacher and I like reading and writing and I have nice friends to play with"
Pupil Year 2

"I love Nettlestone Primary School as they have been amazing with ensuring a smooth transition from another nursery to the fantastic Pre-School here."
Parent

"I like to go on school trips on the mini bus"
Pupil Year 3
"They have lovely puddings"
Pupil Year 1

"We feel that Nettlestone Primary School is special, because it's a school that cares about its pupils and their education. The teachers are loving and easily approachable. We made the best choice for our child."
Parent

Welcome

Dear Parents and Carers,
We would like to extend a very warm welcome to you and your family from everyone here at Nettlestone Primary School.

We are proud to be part of a Federation of schools working together to achieve the best possible outcomes for all of our children. Our partner school, Newchurch Primary, is only 20 minutes away and together we strive to give our children the very best opportunities to develop, learn and thrive.

As a Federation we have one Governing Body and we work closely together across the two schools to maximise opportunities and resources even sharing staff where appropriate to do so. I have the post of Executive Headteacher across the Federation and I co-lead Nettlestone Primary School with Mrs Anna Jacobs, Head of School.

We pride ourselves on being a caring school and aim to ensure that we develop happy, supported and successful independent learners ready for life within today's society. Our motto of '**Changing lives for changing times**' ensures that every child leaves our school ready for their next big step!

Our 'Mission Possible' curriculum ensures our aims are promoted across the school community and this vision underpins all learning. Our curriculum is carefully planned, ambitious, opportunity rich and will present frequent opportunities for children to; make healthy choices, develop resilience, make a real difference to the wider world, live respectfully and be the best they can be to make it happen!

Our expectations of presentation, behaviour, outcomes and pupil achievement are very high and, with the help, support and involvement of our parents, our pupils make very good progress and have the best possible start to their education.

I hope you find this prospectus useful and informative. If there is anything you are unsure about or would like more information on, please contact the school office. We will be happy to answer your queries or to arrange an appointment for you to look around our school.

We look forward to meeting you and your child and welcoming your family to Nettlestone Primary School in the near future.

Yours sincerely
Miss Kirsty Howarth
Executive Headteacher



Nettlestone Primary School



School Details

Nettlestone Primary School

Nettlestone Primary School, Seaview. Isle of Wight. PO34 5DY

Ofsted Rating - Good June 2024

Outstanding personal development judgements

Pupils - Age range 3 - 11yrs

Published admission No 210

Federated with Newchurch Primary School



'This is a caring school that has high ambitions for pupils achievements'
OfSTED 2024



What is life like at Nettlestone Primary School?

Education should provide opportunities for each child to succeed in a variety of ways, preparing our young people for a future in which they can thrive in whatever pathway they choose. At Nettlestone Primary School we firmly believe that learning should be fun, satisfying and motivating; pupils should be able to celebrate their success and achievement with pride; and the curriculum should be enriched by an extensive range of extra-curricular opportunities accessible to all. We are proud to achieve strong academic results that demonstrate pupils making significant progress from their unique starting points. In short, we make sure that we always teach 'the right kids, the right stuff, at the right time and in the right way...every day!'

A child attending Nettlestone Primary School can expect to experience:

- The best teaching from the best teachers.
- Exceptional levels of support for all individuals.
- A caring, nurturing family community.
- Outstanding standards of behaviour and attitudes to learning from the children that attend our school.
- An ambitious and well-planned curriculum which is broad and balanced and responsive to pupil interests.
- A wide range of extra-curricular activities and enrichment programmes.

Nettlestone Primary School has the advantage of being set in beautiful grounds backing onto a farm and surrounded by stunning countryside. Some of our school building is traditionally Victorian and offers light and well-resourced classrooms as well as excellent play, games and sports facilities. We love learning outdoors and take advantage of learning in our local area whenever we can, whatever the weather!

"Nettlestone Primary School is a great first step into the world of education. It has offered our son a nurturing environment to bring out his personality and supported us as parents through an important learning phase."
Year 1 & 5 parent.

Our classrooms and learning spaces look a little different at Nettlestone as we aim to foster a positive identity and sense of belonging. You will see neutral colours, soft lighting and natural resources used creatively to create calm, comfortable areas for learning.

These therapeutic principles are extended into our communal areas including play spaces and corridors.



'Starting in the early years, relationships between adults and pupils are kind and respectful'.
- OfSTED 24

TEACHING AND LEARNING

What will my child be learning at Nettlestone?

English

At Nettlestone Primary School, we are passionate about teaching the right children the right stuff at the right time in order to achieve the highest possible standards of language and literacy.

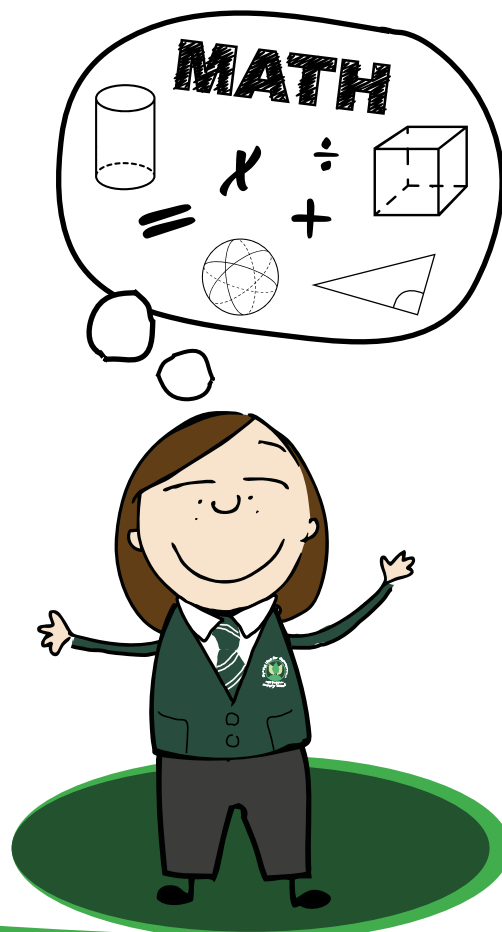
We strive to equip pupils with a strong command of the spoken and written word, and to develop their love of literature through widespread reading for enjoyment. Children are encouraged to exercise perseverance as they learn to read fluently and with good understanding, developing the habit of reading widely and often, for both pleasure and information. Resilience is essential as children learn to write clearly, accurately and coherently - adapting their language and style for a range of contexts, purposes and audiences.



Mathematics

We want all pupils at Nettlestone Primary School to experience the beauty, power and enjoyment of mathematics and develop a sense of curiosity about the subject with a clear understanding.

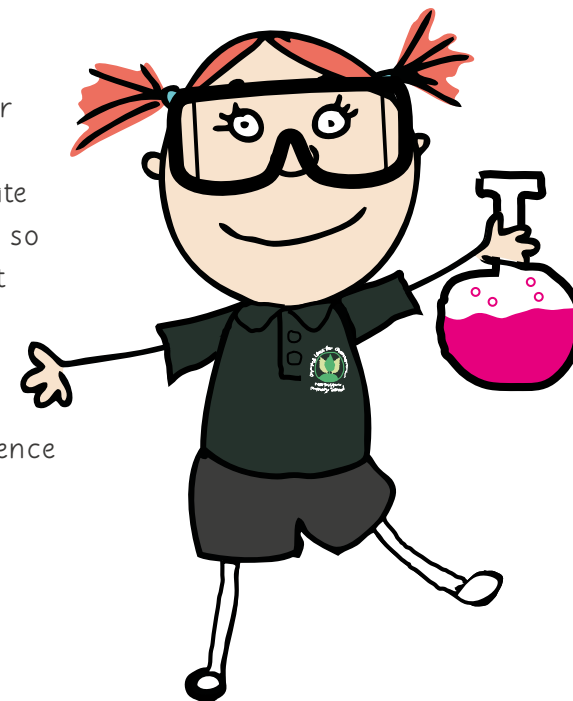
At Nettlestone we foster positive can do attitudes and we promote the fact that maths mastery is a 'mission possible!' We believe all children can achieve in mathematics, and teach for secure and deep understanding of mathematical concepts through manageable steps. We follow a stage by stage approach using concrete and pictorial resources to aid our understanding before progressing to the more abstract approaches to solve rich and sophisticated problems. Mistakes and misconceptions are valued as an integral part of learning and resilience is viewed as an essential learning tool.



'The school has designed an ambitious curriculum that is interesting and well sequenced'.
- OfSTED 24

Science

At Nettlestone Primary School, it is our aim to develop and foster a positive attitude towards science by building on our children's natural curiosity about the world around them. We are passionate about teaching the right children, the right stuff at the right time, so alongside the teaching of our key ideas, the children are taught to raise questions and find answers through a discovery-based approach. This involves prediction, practical exploration, experimentation and analysis. Our Mission Possible curriculum is also designed to develop the children's perseverance and resilience by challenging them to develop their own means of enquiry.



Computing

The curriculum will teach children key knowledge about how computers and computer systems work, and how they are designed and programmed. Learners will have the opportunity to gain an understanding of computational systems of all kinds, whether or not they include computers.

By the time they leave Nettlestone Primary School, children will have gained key knowledge and skills in the three main areas of the computing curriculum: computer science (programming and understanding computational thinking), information technology (using computer systems to process, retrieve and send information) and digital literacy (evaluating digital content and using technology safely and respectfully). The objectives within each strand support the development of learning across the key stages, ensuring a solid grounding for future learning and beyond.



TEACHING AND LEARNING

PE

At Nettlestone Primary School we want Physical Education to have a positive impact on every child physically, socially and contribute to their well-being.

It is our aim at Nettlestone Primary School to provide the opportunity for our children to experience a range of sporting activities for their fun, enjoyment and competition. Through carefully planned PE and sports activities we aim to ensure that all children are happy and enjoy PE, thus raising participation levels both in and out of school and therefore in turn, promoting healthy lifestyles.

We strive to provide high quality PE and sports teaching in both curriculum and after school clubs. We aim to ensure that within their own level of ability all children can achieve and experience success, thereby enabling them to reach their full potential.

We value the benefits of PE and sport to build children's self-confidence, esteem and resilience which is character building and essential for our pupil's development. We aim to provide opportunities for all children to experience competition at various levels both individually and as part of a team.

History

It is our intent for our History curriculum to help pupils gain a coherent knowledge and understanding of Britain's past and that of the wider world and inspire pupils' curiosity to know more about the past. As our pupils progress, they will become equipped to ask perceptive questions; think critically; weigh evidence; sift arguments and develop perspective and judgement. We want pupils to understand the complexity of people's lives, the process of change, the diversity of societies and relationships between different groups, as well as their own identity and the challenges of their time. As with other curriculum subjects, our teaching in History will focus 'the right things, at the right pupils, at the right time'. We want our pupils to develop resilience in their learning and this will be encouraged through our Mission Possible approach to learning (i.e. challenging ourselves and moving outside of our 'comfort zone'). We enrich the learning of History with educational visits to places of historical importance and workshops to enable children to handle 'real-life' artefacts.



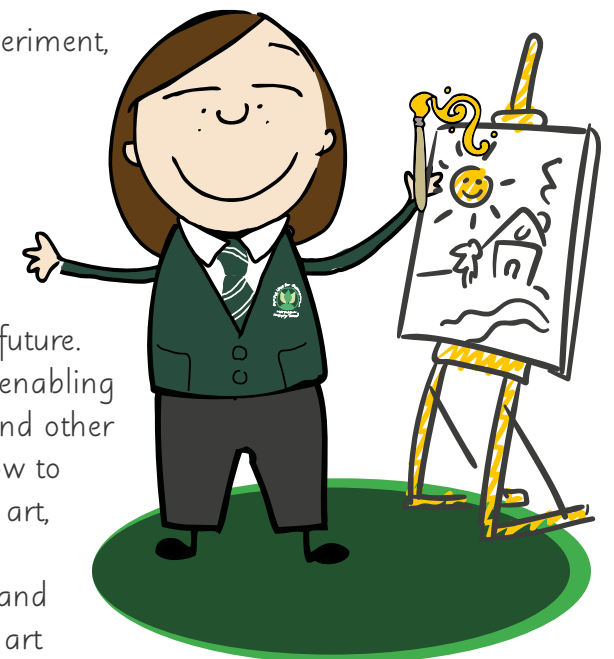
Geography

It is our intent for our Geography curriculum to inspire pupils with a curiosity and fascination about the world and its people that will remain with them for the rest of their lives. Teaching should equip pupils with knowledge about diverse places, people, resources and natural and human environments, together with a deep understanding of the Earth's key physical and human processes. As pupils progress, their growing knowledge about the world should help them deepen their understanding of the interaction between physical and human processes, and of the formation and use of landscape and environments. We want our pupils to gain confidence and practical experiences of geographical knowledge, understanding and skills that explain how the Earth's features are shaped, interconnected and change over time. Through this experiential approach, we want our pupils to develop resilience and a desire to approach any challenge with a Mission Possible attitude! We enrich our teaching and learning of Geography with fieldwork activities in the local area and further afield, with every year group within key stage 2 experiencing a residential opportunity.



Art & Design

We will equip children with the knowledge and skills to experiment, invent and create their own works of art, craft and design. Enabling them to demonstrate resilience by improving and persevering on specific skills to improve in areas identified personally to them. Children will also know how art and design both reflect and shape our history, and contribute to the culture, creativity and wealth of our nation, showing children that art can be a worthwhile career choice for the future. We approach art with the same 'Mission Possible,' attitude, enabling them to become proficient in drawing, painting, sculpture and other art, craft and design techniques. The children are taught how to evaluate and analyse creative works using the language of art, craft and design. This leads to them having a better understanding of great artists, craft makers and designers, and understand the historical and cultural development of their art forms. The objectives within each strand support the development of learning across the key stages, ensuring a solid grounding for future learning and beyond.



TEACHING AND LEARNING

Music

At Nettlestone Primary School, our high quality music education will engage and inspire pupils to develop a love of music and their talent as musicians, and so increase their self-confidence, creativity and sense of achievement. Pupils will develop resilience as they are challenged appropriately (we are sure to teach the 'right stuff, to the right children at the right time and in the right way') with our Mission Possible Curriculum. As pupils progress, they will develop a critical engagement with music, allowing them to compose, and to listen with discrimination to the best in the musical canon. We are able to offer opportunities for children to learn a wide range of musical instruments and participate in our school or federation choir should they wish to do so.



Spanish

Although we live on an Island, we recognize that to thrive in our fast-changing and diverse world not only do we need to feel confident in our sense of self, but we need to be open to engaging positively with other identities and cultures. Learning a foreign language plays a vital role in this aim and through our teaching of Spanish, we strive to foster pupils' curiosity and deepen their understanding of the world. We passionately believe that learning a foreign language should be a dynamic and engaging experience with meaningful links to learning in other curriculum areas. Use of a wide range of songs, games and stories is integral to our teaching and means that the Spanish curriculum is accessible for all children. Each pupil is encouraged to develop a resilient learning attitude and to be the very best that they can be. We strive to make sure that being able to express their thoughts and opinions in another language, as well as understanding and responding to its speakers, both in speech and in writing, is an exciting and rewarding experience for our children.



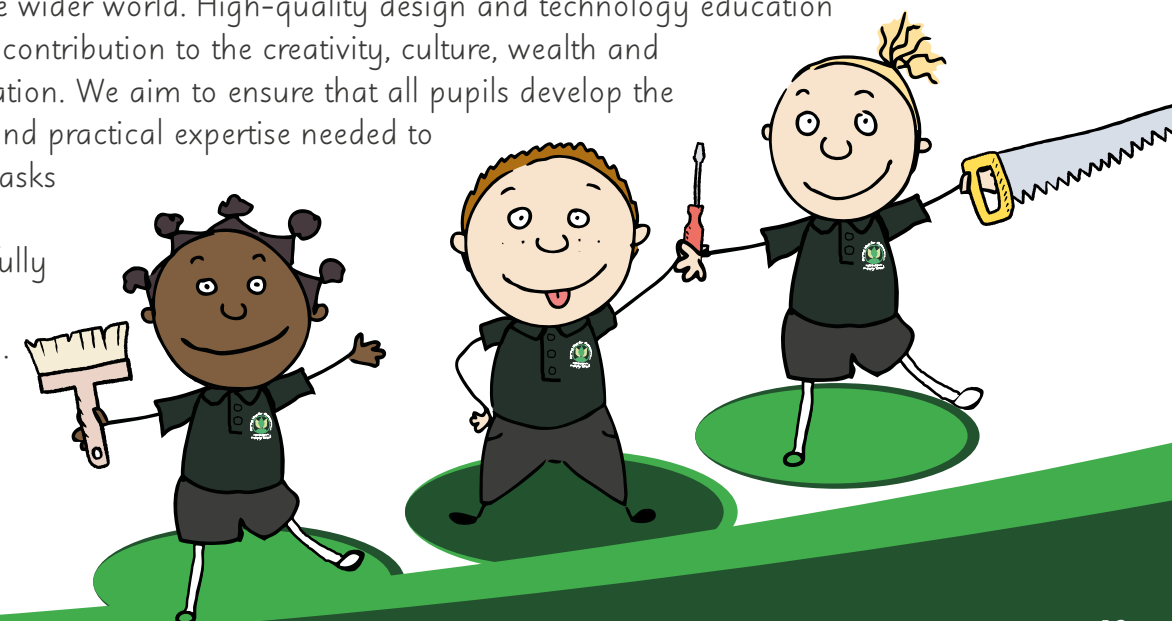
Personal, Social and Health Education

Pupils at Nettlestone Primary School need knowledge that will enable them to make informed decisions about their wellbeing, health and relationships and to build their self-efficacy into adulthood. Pupils can also put this knowledge into practice as they develop the capacity to make sound decisions when facing risks, challenges and complex contexts. Everyone faces difficult situations in their lives. Pupils will know how and when to ask for help, and to know where to access support. This will be communicated clearly to pupils, in a carefully sequenced way, within a planned programme of lessons. Teaching will include well-chosen opportunities and contexts for pupils to embed new knowledge so that it can be used confidently in real life situations. They can also enable schools to promote the spiritual, moral, social, cultural, mental and physical development of pupils, at school and in society.



Design Technology

Design and technology at Nettlestone is an inspiring, rigorous and practical subject. Using creativity and imagination, pupils design and make products that solve real and relevant problems within a variety of contexts, considering their own and others' needs, wants and values. They acquire a broad range of subject knowledge and draw on disciplines such as mathematics, science, engineering, computing and art. Pupils learn how to take risks, becoming resourceful, innovative, enterprising and capable citizens. Through the evaluation of past and present design and technology, they develop a critical understanding of its impact on daily life and the wider world. High-quality design and technology education makes an essential contribution to the creativity, culture, wealth and well-being of the nation. We aim to ensure that all pupils develop the creative, technical and practical expertise needed to perform everyday tasks confidently and to participate successfully in an increasingly technological world.



ATTENDANCE AND TIMEKEEPING



What are the school opening and closing times?

We operate a start time in the mornings of 8.30am for all our children except pre-school they start at 8.45am.

Upon arrival all children should go straight to their classroom. We also operate a breakfast club provision from 7.45am to assist working parents who may require an earlier start. We also offer additional childcare after school until 5pm via COOLKIDZ. Please contact the school office if you need this care facility.

What do I do if my child is late to school?

If you are aware that you are running late, please ring ahead to inform us to prevent us worrying about you. Upon arrival to school please escort your child to the main school office whereby a member of the admin team can sign them in. Be sure to tell us at this time if your child requires a school meal. We will ensure your child safely gets to their classroom to enjoy the rest of their day.

What do I do if I am going to be late in collecting my child?

There are times when parents are late collecting their child from school, if this is going to happen we ask that school is kept informed.

If a child is not collected and no reason is given we will place them in after school club for which a charge will be added to your account.

If a child is still not collected, we will follow our Late Collection of Child Policy (a copy of which can be found on our school website).

Can I send someone else to pick up my child?

Keeping children safe is our priority and we will only hand a child over to a person who has been added to an approved list by the parent. Should collection arrangements change please contact the school office to inform us at the earliest opportunity.



How do I know if my child should stay home from school?

As a parent you are the best person to know if your child is well enough to go to school and is able to learn.

To prevent the spread of infection, if your child experiences diarrhoea or vomiting we ask that they do not attend school for 24 hours after the last episode, and if your child suffers with both symptoms then we ask that your child remains at home for 48hrs. Please always send a follow up email for any school absence due to medical reasons.

When are school holidays?

We always publish our calendar dates on our school website. In addition to the holidays the school can take 5 INSET days which are used to ensure that the teachers receive additional training to provide the best educational experiences for your child. We publish these dates as soon as we are able.

Can I take my child on holiday in term time?

No. The Governing Body have opted to follow the IOW Local Authority guidance for school attendance and therefore the school is expected not to grant any period of leave during term time unless sufficient evidence to support exceptional circumstances is provided by the parent. The school is obliged to pass on any information regarding term time holidays to the Education and Inclusion Team who may wish to take further action including the issuing of Truancy Penalty Notices. Please see our Registration and Attendance Policy on the school website for further information.

How do I report my child's absence from school?

We would prefer you to notify us as soon as possible on the day of the absence. A message can be left on the school answer machine should no one be available to take your call. A member of staff will always contact you back. All absences are expected to be verified with a written email explaining the reason for the absence upon return to school.



SCHOOL MEALS AND DRINKS

Does the school provide a hot meal for my child?

Currently the Government operates a Universal Free School Meal system for any child in either Reception Class, Year 1 or Year 2. This entitles your child to a free hot meal every day. Meals are served to the children at the table and good manners are promoted as part of our 'Dining Experience'. Currently our school meal provider is Chartwells and we have a fabulous chef to cook our meals on site. The menu is shared on our website and every week in the school newsletter.

Some families may be entitled to additional benefits and we would encourage you to complete the Pupil Premium Registration Form if you are eligible as this will enable your child to have access to more support throughout their time in school.

Can I provide a packed lunch for my child?

We encourage children to bring a healthy lunch to school which could include items such as fruit, vegetables, pasta or rice salads, yoghurts.

We ask that children do not bring nuts or foods containing nuts to school as some staff/children in school have allergies. Sweet products are also discouraged.

Children are permitted to have a drink of water and a healthy snack should they become hungry or thirsty during their day.

How long do the children get to eat lunch?

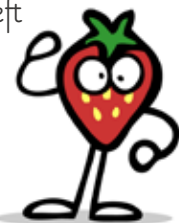
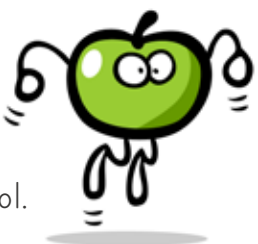
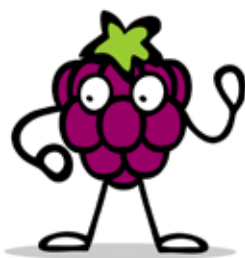
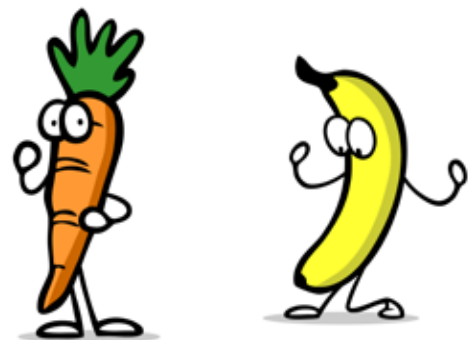
We operate a staggered lunchtime and children have 40 minutes to eat their lunch and enjoy playing with their friends. We appreciate that it takes a little while to get into this routine and so lunchtimes are a little longer when the children first join school.

Will my child need a water bottle?

We strongly encourage all children to have their own refillable water bottle. Please ensure this is named and is in school on a daily basis. Children are at greater risk of dehydration than adults and so we will ensure that we give timely reminders for your children to have drinks throughout their day.

It is my child's birthday, can I send in sweet treats?

Whilst this is a lovely idea we are a healthy school so prefer that the sweets and treats are left for the celebrations at home please. This also supports the individual health needs of children with allergies.



HEALTH ISSUES

What do I do if my child has prescribed medication?

If your child needs to have prescribed medication at school you must complete a form at the school office or download from our school virtual office on our website. We ask that medication at school is kept to a minimum and if antibiotics are prescribed for less than four times a day we suggest this can be organised out of school time.

All medication held on school premises are kept locked and secured.

What happens if my child has a medical/dental appointment?

We ask that you please try to arrange medical appointments outside of school time to avoid interrupting learning. If this is unavoidable we ask that you bring the appointment letter to the school so it can be recorded on the register.

What happens if my child has an accident at school?

We have staff trained in paediatric first aid on site who can offer reassurance and first aid to pupils who are injured at school.

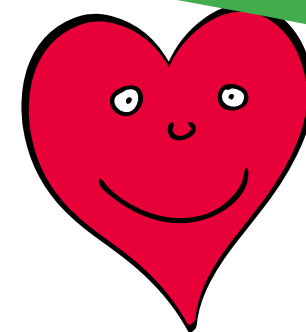
If the injury is significant we will always inform parents and advise of how to proceed.

What if my child has a long term or chronic medical condition?

Please talk to us if your child has a chronic or long term illness. We will always aim to support your child and are able to create individual health care plans in conjunction with parents for children requiring specialist support or intervention. Serious allergies and asthma related conditions will also be supported by an appropriate plan.

What if I am worried that my child may have additional learning needs?

Please talk to us if you feel your child has additional learning needs. If we need to discuss this further, we will talk to our SEND team for further advice and strategies.





SCHOOL UNIFORM

What does my child need to wear to school?

It is our preference that our children wear the following to school, we have very few items with a personalised logo in order to make the uniform as affordable as possible for parents. Children will wear their PE uniform into school on their designated PE day.

SCHOOL UNIFORM	PE KIT - WITH NETTLESTONE LOGO
Bottle green polo shirt with school logo Years 1/2 only Year R/1/2 - Bottle green polo shirt with school logo Years 3//4/5/6 - White shirt and school tie Year 5/6 - School blazer (optional)	Green PE shirt
Bottle green v necked jumper or cardigan with school logo	Black PE Shorts
Grey trousers	Black hoody and tracksuit bottoms
Grey knee length skirt	Trainers
Optional grey shorts	All items are available from Pendle on http://nettlestone-primary-school.footballkit.co.uk The company will add initials which is advised to avoid lost property. Please see website for size guide and information on garmets.
Optional green gingham dress	
Grey, black or white socks or grey tights	
Black sensible school shoes, not trainers or fashion style	
Simple hair ties - no fancy bows or head bands please and only school colours.	
A pair of welly boots (any colour) to keep in school (Reception only)	

All items with the school logo can be purchased from Kids and Co in Ryde all other items can be purchased from wherever you prefer to shop. School can provide 'new to you' items at reduced cost.

Can my child wear jewellery in school?

Schools are busy places and we find that jewellery can cause unnecessary accidents. We ask that pupils do not wear jewellery in school apart from a simple watch to aid their telling of time. Devices with internet access are not permitted. Small stud earrings can be worn but these MUST be removed and not worn on PE days. If your child cannot remove their own earrings we ask that they do not wear them.

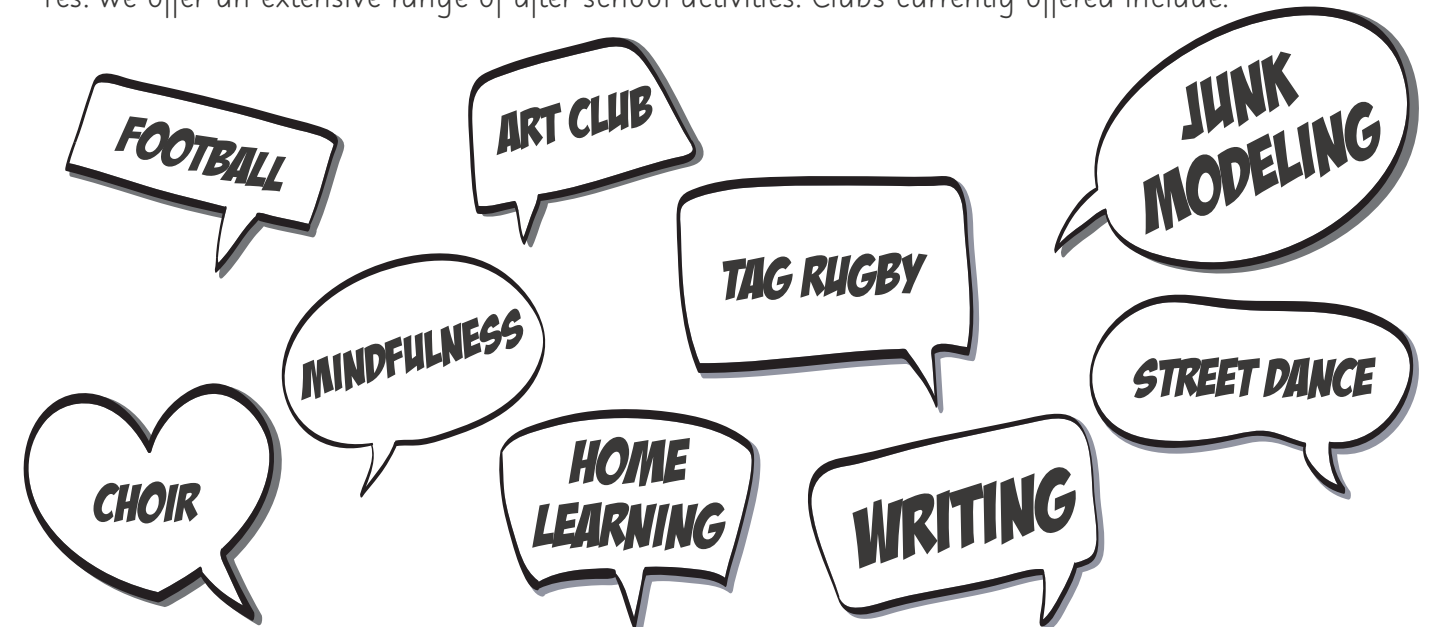
CLUBS & ACTIVITIES

Do you operate a breakfast club?

Yes! Breakfast club runs from 7.45am each morning. Parents are able to sign up and book via our School Money System.

Can my child take part in any extra curricular activities?

Yes. we offer an extensive range of after school activities. Clubs currently offered include:



Clubs run each evening and children are asked to make a termly commitment to participate. Currently, our clubs are £2 per week, per club. We also operate our 'Coolkidz' provision that ensures we have extended childcare until 5pm daily for school age children.

Will my child experience educational visits?

Yes! Each half term we enrich our curriculum with additional opportunities, this could be a school visit, a visit from an expert, workshop opportunity or a residential experience. We currently offer every key stage 2 class a residential experience, with our older pupils venturing off the island.



'Pupils' personal development is a strength of the school'.
- OfSTED 2024



WORKING IN PARTNERSHIP

How do you communicate with Parents?

We pride ourselves on our open door policy and welcome the views of parents. We use several forms of communication including; a text messaging service, emails, a weekly newsletter, updates through the school website and our dedicated school Facebook page.

It is important that parents keep the school updated of any changes to contact details to facilitate this communication.

We also operate a Parent Forum to act as a critical friend to proposed aspects of school improvement. Mentoring days are held three times a year and this is your opportunity to discuss the progress, effort and attainment of your child to date. If you have any immediate concerns please contact the school office who will be happy to assist.

What do I do if I need to see my child's teacher?

Quick communications can take place at drop off or pick up times. If a more lengthy meeting is required please contact the school office who will be happy to coordinate a convenient time for both parties.

How can parents get involved?

We welcome parental involvement in their child's education. We ask that you support reading at home by sharing a story for at least 10 minutes every day and sign our reading pledge.

In all year groups you will be asked to engage with the online learning platform for your child which will give you access to photos, observations and comments relating to their learning experiences in school.

Our Friends Association (FONS) also welcome volunteers as they actively promote fundraising opportunities for our school. You don't have to do anything amazing but it would be amazing if you could do some thing to contribute as we really could not do without the additional monies raised by this fabulous team.

What do I do if I need to make a complaint?

Whilst we never set out to upset anybody there may be times when you feel you need to make a complaint. Please see the Federation Complaints Policy for how to do this. Please refrain from using social media to share any concerns you may have. We would always rather talk things through with you if we can and together we can hopefully resolve matters.



KEEPING CHILDREN SAFE

How will the school keep my child safe?

Keeping children safe relies on safe premises, safe people and safe policies and practices. There will always be a Designated Safeguarding Lead in the school with a high level of expertise in safeguarding and child protection. All staff are appropriately trained and recognise that keeping children safe is their primary responsibility. We have fully qualified first aiders across the school and many staff have received bespoke paediatric first aid training.

Will you share my personal information?

As your child joins our school we will start to hold a lot of information concerning your family. In accordance with UK GDPR protocols we will keep this safe and secure and will only share with third parties in the event of safeguarding concerns or criminal proceedings. You will be asked to sign to confirm that you understand these principles.

How will you use images of my child?

There will be occasions when we may take photographs of the children at our school or be requested by the media to submit photos. You will be asked to provide consent as to how you would like these images to be used. We appreciate that some families may not wish their child to appear on social media and we will respect these wishes and ask our community to do the same. Consent can be changed at anytime.



"Signs around the school say that safeguarding is a priority and no-one is in any doubt that this is the case"
- Ofsted

ADMISSIONS

How do I apply for a place at Nettlestone Primary School?

Starting school is a very important time for young children and we aim to make it a happy and exciting event. You will receive notice in plenty of time from the local authority if a place becomes available for your child to start school.

At Nettlestone Primary we welcome children into school from the beginning of the school year in which they have their fifth birthday until the end of the school year in which they become eleven years old. This is the time at which they transfer to secondary school.

At Nettlestone Primary School we also have a Pre-School provision. For further information please contact the School office or see our school website www.nettlestoneprimaryschool.co.uk

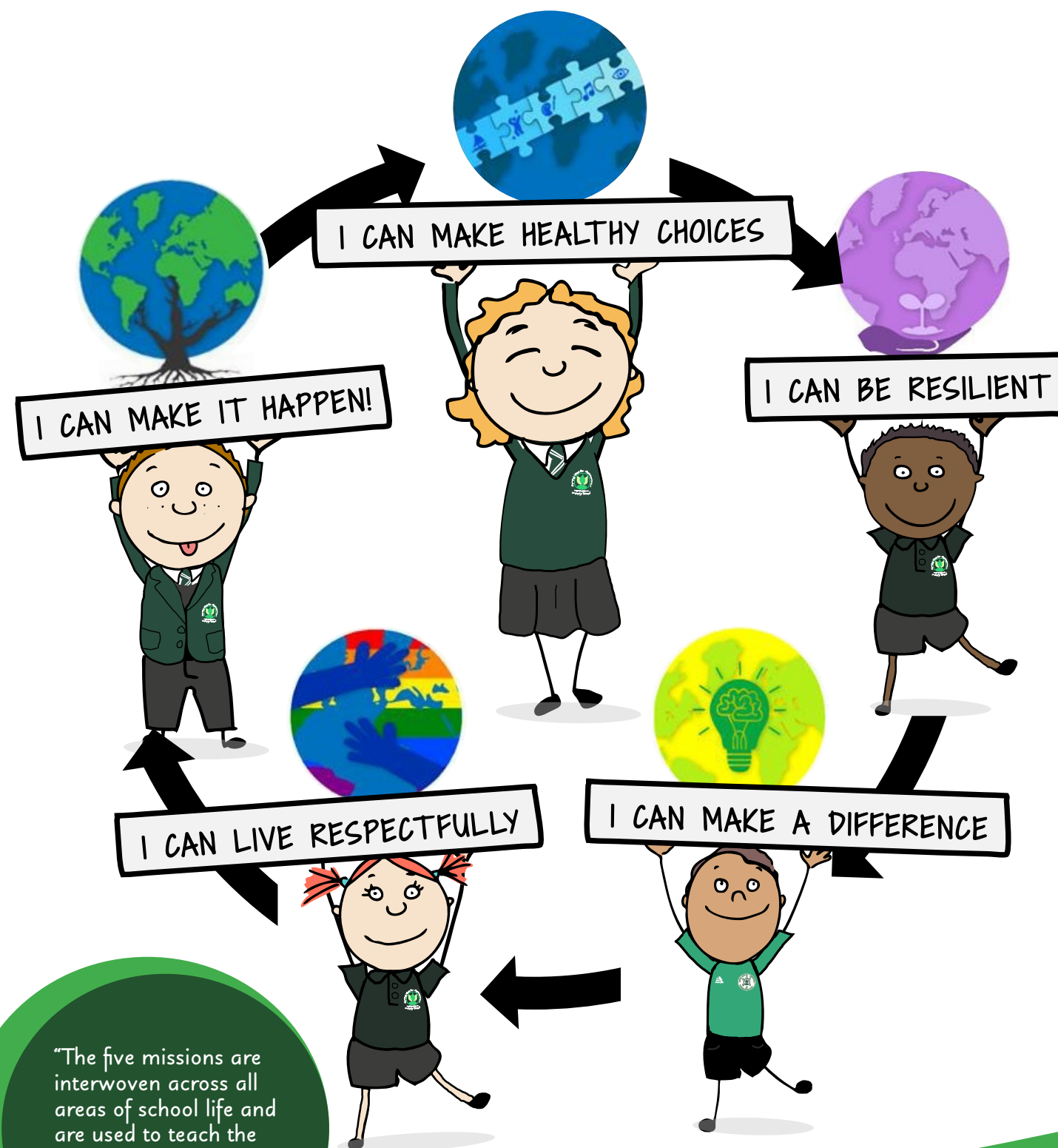
Visiting

Parents who are thinking of applying for a place at Nettlestone Primary are warmly invited to visit us and look around. Please call the office to make an appointment.



OUR MISSION POSSIBLES!

"Pupils appreciate the school values that are known as Mission Possibles"
- OfSTED 2024



"The five missions are interwoven across all areas of school life and are used to teach the pupils essential life skills"
- OfSTED 2024

Contact

Executive Headteacher: Miss K Howarth BA (QTS), NPQH

Head of School: Mrs A Jacobs BA (Hons), PGCE, NPQH

Co-Chairs of Governors: Mr I Watterson and Mr M Day

SENCo: Mrs E Kelly (contact via school main email address)

Office Administrator: Mrs Speake

Nettlestone Primary School, Seaview. Isle of Wight. PO34 5DY

Telephone: (01983) 613171

Email: parents@nettlestoneprimaryschool.co.uk

www.nettlestoneprimaryschool.co.uk

