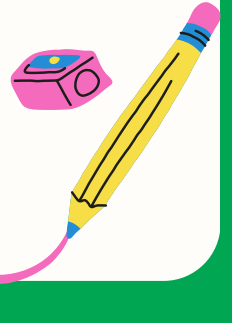




# Nettlestone News

Newsletter 1



## Upcoming Events

CLUBS START - Sept. 8th  
School Photographs - Sept. 9th  
KS2 Celebrations - Sept 12th  
Young Governor Elections -  
Sept. 15th  
Phonics & Reading Workshop -  
Sept. 16th  
KS1 Celebrations - Sept. 19th  
Year 3&4 Workshops - Sept. 25th  
KS2 Celebrations - Sept. 26<sup>th</sup>

## Reminders PE Days

EYFS - Monday/Tuesday  
Year 1 - Tuesday / Thursday  
Year 2 - Wednesday/Thursday  
Year 3 - Wednesday/Thursday  
Year 4 - Wednesday/Friday  
Year 5 - Monday / Tuesday  
Year 6 - Monday / Thursday



## Welcome Back!

Hello lovely families,

It's so wonderful to have the school buzzing with life again! I hope you all had a restful summer—whether that meant beach days, muddy walks, or just a few extra lie-ins. However you spent it, I hope it brought joy and a chance to recharge.

There's something really special about that first week back: the sound of laughter in the corridors, the excited chatter about new pencil cases and packed lunches, and the slightly nervous but keen faces as we all step into a fresh year together determined to make it happen!

To our new families: welcome! We're thrilled to have you join our community and to those returning: it's lovely to see you again. This year, we've got lots planned—new learning, new adventures and in response to parent feedback a new look to the newsletter, we hope that you find it easy to navigate to find all of the essential information that you need.

As always, our door is open. Whether it's a quick hello, a question, or just a chat, staff are here to help.

Here's to a fantastic term ahead!



## Reminders INSET Days

Teachers have been participating in training this week further enhancing their safeguarding knowledge and creating calm classrooms for the return to school. A further training date has been set for:

27th July 2026

2 more dates are yet to be allocated we will notify you as soon as these have been approved.

# School Attendance - every day matters!

We have been asked by the DfE to remind parents that school attendance is mandatory. It is vital for all children to attend school every day to minimise, as far as possible, the longer-term impact on children's education, wellbeing and wider development.

We are proud that our 5 Mission Possibles can be easily linked to improving attendance:

Make the healthy choice to...book any holidays out of term time, trying to secure non-urgent appointments out of school hours and be sending your child to school everyday!

Promote resilience by...sending your child to school every day and by adhering to daily routines that promote punctuality.

Make a difference by...appreciating that every day counts as school absence can waste teacher time as they attempt to repeat and catch up on lost learning. Understanding that coming to school every day will seriously improve your child's attainment, progress and overall life chances, attainment and progress.

Live respectfully by...always being honest about any reasons for school absence and alerting the school as soon as possible with any reason for non-attendance and by engaging purposefully with any support when offered by the school.

Make it happen by...doing all that you can to ensure you child is in school, ready to learn every day!

## School Attendance - Holidays

We always aim to have the every best attendance figures at Nettlestone Primary School and are keen to work with parents to secure regular attendance for their child.

Our attendance has been 97.4% this week which is a fabulous start!

Please remember that holidays are not authorised in term time and a leave of absence form is required to be completed for all absence requests.



Table of Right School Terms And Holidays  
2025 - 2026  
Determined programme of school term and holiday dates for county and controlled schools for the academic year 2025/26

<b>SEPTEMBER 2025</b>	<b>OCTOBER 2025</b>	<b>NOVEMBER 2025</b>
MT 1 8 16 22 29 T 2 9 16 23 30 MT 3 10 17 24 T 4 11 18 25 W 5 12 19 26 T 6 13 20 27 F 7 14 21 28	MT 6 13 20 27 T 7 14 21 28 MT 1 8 15 22 29 T 2 9 16 23 30 MT 3 10 17 24 31 T 4 11 18 25 W 5 12 19 26 T 6 13 20 27	MT 2 9 16 23 30 T 3 10 17 24 31 MT 4 11 18 25 T 5 12 19 26 MT 6 13 20 27 T 7 14 21 28 MT 8 15 22 29
<b>DECEMBER 2025</b>	<b>JANUARY 2026</b>	<b>FEBRUARY 2026</b>
MT 1 8 15 22 29 T 2 9 16 23 30 MT 3 10 17 24 31 T 4 11 18 25 W 5 12 19 26 T 6 13 20 27 F 7 14 21 28	MT 6 13 20 27 T 7 14 21 28 MT 1 8 15 22 29 T 2 9 16 23 30 MT 3 10 17 24 31 T 4 11 18 25 W 5 12 19 26 T 6 13 20 27	MT 2 9 16 23 30 T 3 10 17 24 31 MT 4 11 18 25 T 5 12 19 26 MT 6 13 20 27 T 7 14 21 28 MT 8 15 22 29
<b>MARCH 2026</b>	<b>APRIL 2026</b>	<b>MAY 2026</b>
MT 2 9 16 23 30 T 3 10 17 24 31 MT 4 11 18 25 T 5 12 19 26 W 6 13 20 27 T 7 14 21 28 F 8 15 22 29	MT 1 8 15 22 29 T 2 9 16 23 30 MT 3 10 17 24 31 T 4 11 18 25 W 5 12 19 26 T 6 13 20 27 F 7 14 21 28	MT 2 9 16 23 30 T 3 10 17 24 31 MT 4 11 18 25 T 5 12 19 26 MT 6 13 20 27 T 7 14 21 28 MT 8 15 22 29
<b>JUNE 2026</b>	<b>JULY 2026</b>	<b>AUGUST 2026</b>
MT 1 8 15 22 29 T 2 9 16 23 30 MT 3 10 17 24 31 T 4 11 18 25 W 5 12 19 26 T 6 13 20 27 F 7 14 21 28	MT 6 13 20 27 T 7 14 21 28 MT 1 8 15 22 29 T 2 9 16 23 30 MT 3 10 17 24 31 T 4 11 18 25 W 5 12 19 26 T 6 13 20 27	MT 2 9 16 23 30 T 3 10 17 24 31 MT 4 11 18 25 T 5 12 19 26 MT 6 13 20 27 T 7 14 21 28 MT 8 15 22 29

The term dates for 2025/26 can be found on the school website or at

<https://www.iow.gov.uk/schools-and-education/schools/school-term-dates-and-development-day-closures/>





## WE CAN LIVE RESPECTFULLY—RESPONSIBLE CAR PARKING

We would like to say a big thank you to all of our community for the respect and kindness shown at pick up and drop off during the first week of the school year.

New families that have joined us may be unaware of the village protocols that our community try to adhere to in order to avoid upsetting any of our neighbours and residents. Within our locality we have plenty of parking within a five/ten minutes walking distance. Please make sure that this additional time is factored into your journey planning to ensure a punctual arrival at school at 8.30am. Please also ensure that respect is shown for 'Nettlestone Green'. This beautiful green area, in the centre of Nettlestone, has limited parking facilities around it, so please make sure that you do not park on the zebra crossing hash-lines or on the double yellow lines. We want everyone to be safe.

Residents of the village have also requested that drivers demonstrate respect when parking so that their driveways and access routes are not compromised at peak times. Please just double check this before you exit your vehicle.

We do appreciate drivers exhibiting kindness and due care and attention at all times and embracing our 'mission possible' to be respectful and thank you to all who have shown this to date.

Thank you for helping to keep our community safe.



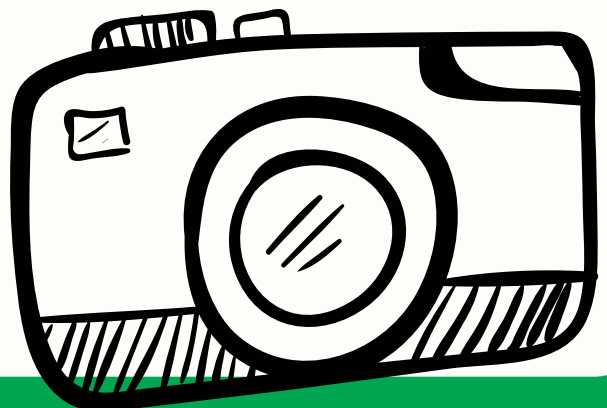
## REMINDER INDIVIDUAL and SIBLING PHOTOGRAPHS

Next Tuesday (9<sup>th</sup> September) all children will have the choice to have their individual and sibling group photography taken. Groups will be taken to the hall at various time throughout the day.

Our neurodiverse children have all been informed that this event is taking place and they will be supported through the day - if you feel your child will require any additional support, please give the school office a call to discuss.

Please ensure that all children are wearing full school uniform on Tuesday. If children are due to have a PE session then please make sure they bring their PE kit into school with them so they can change.

We look forward to seeing all of those smiley faces!



## Keeping Children Safe at School

In line with statutory regulations we are required to collect a minimum of two emergency contact numbers for every child in school. This ensures that in the event of an emergency we can easily and quickly contact immediate family or close family friends of the child involved.

If you are unsure if you have provided two contacts please contact the school office as soon as possible where Mrs Harris will be happy to check. Thank you for your co-operation.

The Designated Safeguarding Lead for the school is Miss Howarth but Mrs Jacobs, Mrs Kelly and Mrs Martin are suitably trained to deal with any concerns regarding child safety or welfare that you may have. Please do not hesitate to contact the school at the earliest opportunity to raise any concerns or worries you may have and we will do our best to advise and assist.

## Reminders Seesaw

You should have received your child's new Seesaw home learning code for this academic year. Please log out of their old code and use the new code.



We've taken on board comments to ensure you see snippets of your child's learning more regularly in each class and so please ensure you are logged into your parent account.

If you do not have a parent account please contact school and we will be happy to help.



## Assembly this week...

Mrs Jacobs welcomed the whole school back to another exciting year ahead on Wednesday! She talked to everyone about the fact that, for them, lots has stayed the same but there are some exciting differences too! To illustrate this point, she read Jabari Jumps by Gaia Cornwall to the children.. You can enjoy it here:

<https://www.youtube.com/watch?v=RfpIivqO3ic>



## School Dinners - menu for next week

	Monday	Tuesday	Wednesday	Thursday	Friday
Main	Cheese & Tomato Pizza	BBQ Chicken & Rice	Roast Pork & Roast Potatoes	Beef Burger & Wedges	Battered Fish & Chips
Vegetarian	Broccoli & Leek Tart	Macaroni Cheese	Butternut Squash & Tomato Bake	Quorn Burger & Wedges	Veggie Fingers & Chips
Dessert	Chocolate Brownie	Fruits of the Forest Jelly	Banoffee Pie	Strawberry Ice Cream	Ginger Biscuit & Fruit



**School dinners are now £3.10**  
**ALL DINNERS MUST BE PAID FOR AT THE POINT OF ORDER**

